



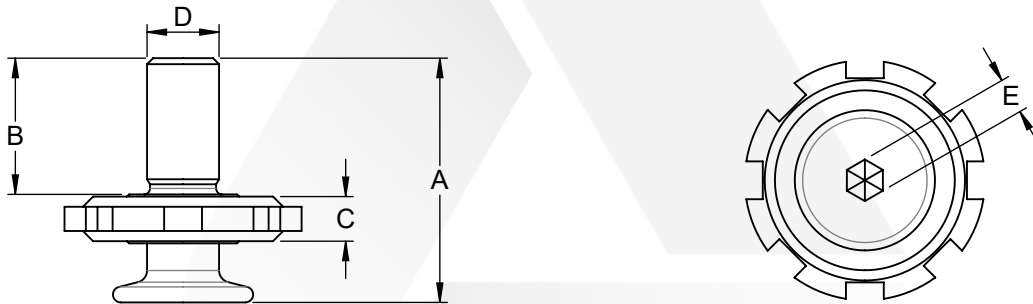
SINGLE & DOUBLE STUD

■ Load capacity $F_z > 18 \text{ KN}$

DIMENSIONS

	A	B	C	D	E	Weight ⁽¹⁾	Washer	See table below		
								Mat	Treat	Thread
SINGLE STUD										
50T 1F1 001	1,272	0,657	0,232	3/8-24 UNF	HEX 3/16	47	Notched	A	ZN	-
50T 1F1 002	1,035	0,420	0,232	3/8-24 UNF	HEX 3/16	43	Notched	A	ZN	-
550 051 941	1,272	0,657	0,250	3/8-24 UNF	HEX 3/16	39	HEX 0,875	A	ZN	-
550 052 949	1,272	0,657	0,232	3/8-24 UNF	HEX 3/16	47	Notched	A	BL	-
550 053 949	1,219	0,604	0,232	3/8-24 UNF	HEX 3/16	46	Notched	A	BL	-
550 054 941	1,626	0,984	0,232	3/8-24 UNF	HEX 3/16	51	Notched	A	ZN	-
550 056 954	1,219	0,604	0,232	3/8-24 UNF	HEX 3/16	46	Notched	A	LB	Left hand
550 057 941	1,219	0,604	0,232	5/16-24 UNF	HEX 3/16	43	Notched	A	ZN	-
550 058 941	1,000	0,457	0,125	1/4-28 UNF	HEX 3/16	29	Notched	A	ZN	-
DOUBLE STUD										
50T 2F1 004	2,441	2,125	-	3/8-24 UNF	-	52	-	B		-
550 151 941	1,299	0,630	0,232	3/8-24 UNF	-	60	Notched	A	ZN	-
550 152 941	1,247	0,578	0,232	5/16-24 UNF	-	56	Notched	A	ZN	-

(1) - grammes



COMPONENTS

Material		Treatment	
A	Steel 42CrMo4 - (42CD4)	ZN	Zinc Nickel Type II Grade B per AMS 2417
B	Steel 36CrNiMo16 - (35NCD16)	BL	Black Zinc Nickel Type II Grade B per AMS 2417
		LB	Lamellar Black Zinc plating